

5,000 ANSI Lumens WUXGA Installation Projector

LS860WU



- 2nd Generation Laser phosphor technology with 20,000 hours lifespan
- 0.81-0.89 short throw ratio
- Wide H/V lens shift
- 360° Creative Applications & 90° Portrait Mode
- Built-in HDBaseT receiver

ViewSonic's LS860WU is an advanced 5,000 ANSI Lumens WUXGA short throw installation projector. Adopting 2nd generation laser phosphor technology, it offers high and consistent brightness for a reliable light source life of 20,000 hours. Short throw ratio, 1.1x optical zoom, wide lens shift, 360° projection and portrait mode together allow for amazing flexibility. Combined with its compact size and built-in HDBaseT, this flexibility helps to create an overwhelmingly immersive experience for blending projection applications in simulation/experience centers, restaurants and gyms, ensuring the cost-effectiveness desired.

High Brightness

Packed with 5,000 ANSI Lumens, it is guaranteed to produce high levels of brightness suitable for large spaces with a lot of ambient light.

5,000 ANSI Lumens



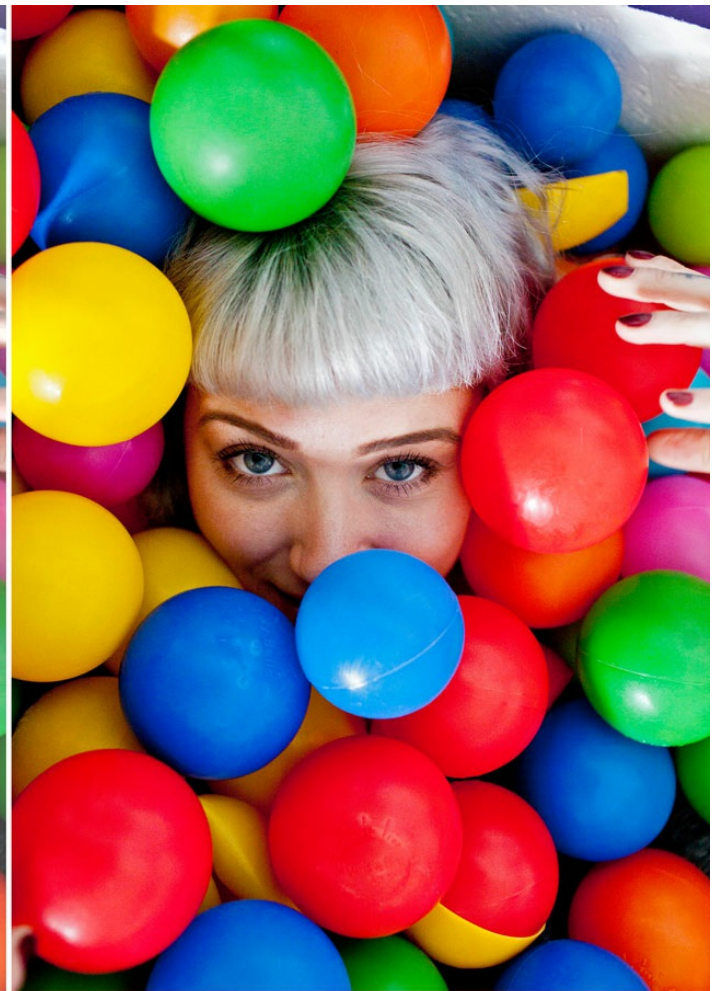
Ultra-high Contrast Ratio

Boasting a 3,000,000:1 ultra-high contrast ratio, even the finest shades of color are enhanced – a key characteristic for delivering razor-sharp images.

3M:1 Contrast Ratio



Normal

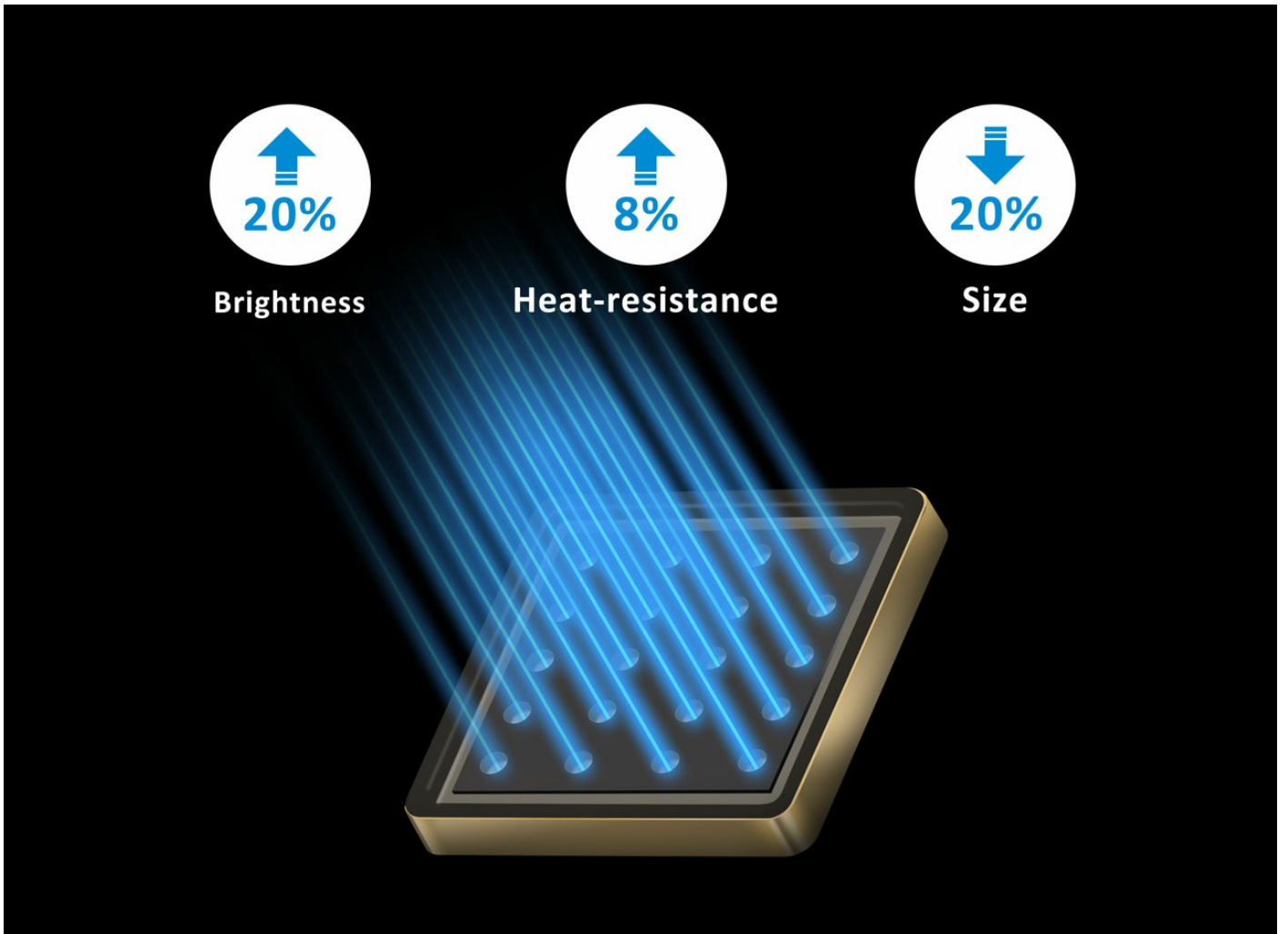


3000000:1

2nd Generation Laser Phosphor Technology

The ViewSonic new laser projector adopts the 2nd generation laser phosphor technology. In addition to inheriting excellent color performance, lamp-free design, and instant on/off switch from the previous generation, technology on the new generation improves around 20% of brightness, better heat-resistance, and a smaller module design, making the images consistent in ambient settings as well as increased reliability with a more compact size for extended use in various scenarios.

2nd Generation **Laser Phosphor Technology**



Long-lasting Lifespan

Laser technology offers a lifespan up to 20,000 hours (4 hours per day for more than 13 years), delivering reliable long-term performance with no degradation in brightness over time so that your installations are consistently vibrant.

20,000 hours Lifespan



No shadows, No blinding lights.

With the latest projection technologies from ViewSonic, you'll enjoy all the benefits a short throw projector can offer. When projecting on to a video wall, there are no distracting shadows on the screen image, offering excellent edge blending projection. Plus, a 1.1x optical zoom provides a higher level of flexibility to fit some of the most challenging installation environments.

0.81-0.89 Short Throw

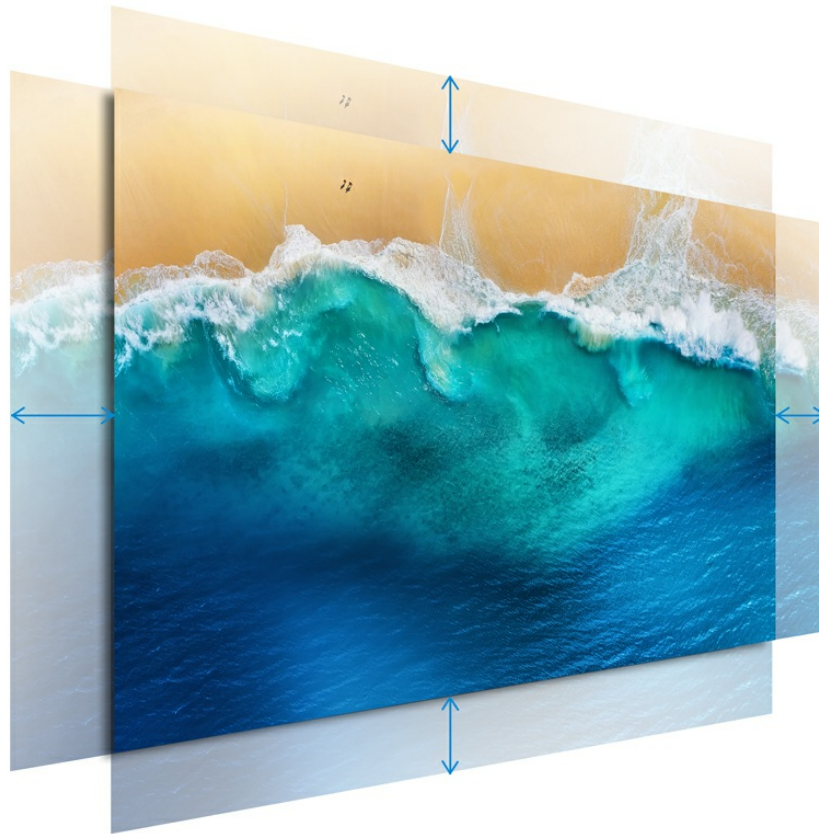
1.1x Optical Zoom



Installation Flexibility

The tool-free, lens shift control knobs make adjusting the projection lens up, down, left, and right easy. It provides flexible installation options with a wide adjustable range (H: +/- 23%, V: +/-50%) and less placement restrictions.

Wide H/V Lens Shift



360° Creative Applications

The projector can freely rotate at any angle vertically to aid with creative applications, allowing projection onto ceilings, walls, or angled signage.

360-degree Projection



90° Portrait Mode

Portrait mode allows users to turn the projector 90 degrees to increase the vertical field of view and add more applications for projection mapping, staging, and advertising.

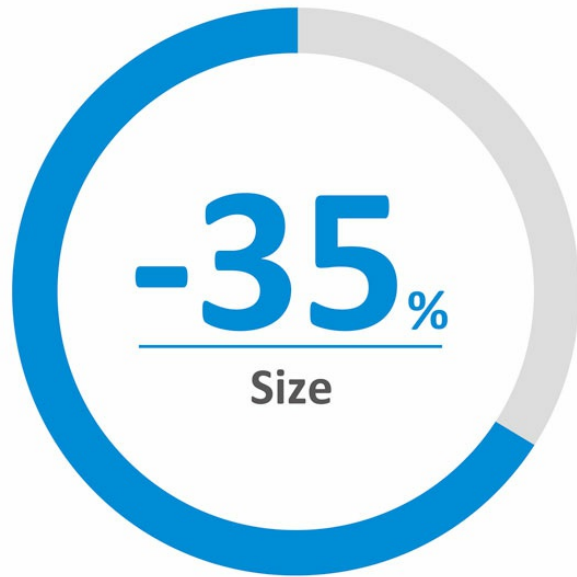
Portrait Mode



Lighter Weight and Compact Size

It is almost half the weight and 35% smaller in size when compared with its predecessor, which reduces the cost of transportation and enhances the ease of installation.

Lighter Weight
Compact Size



Built-in HDBaseT Receiver

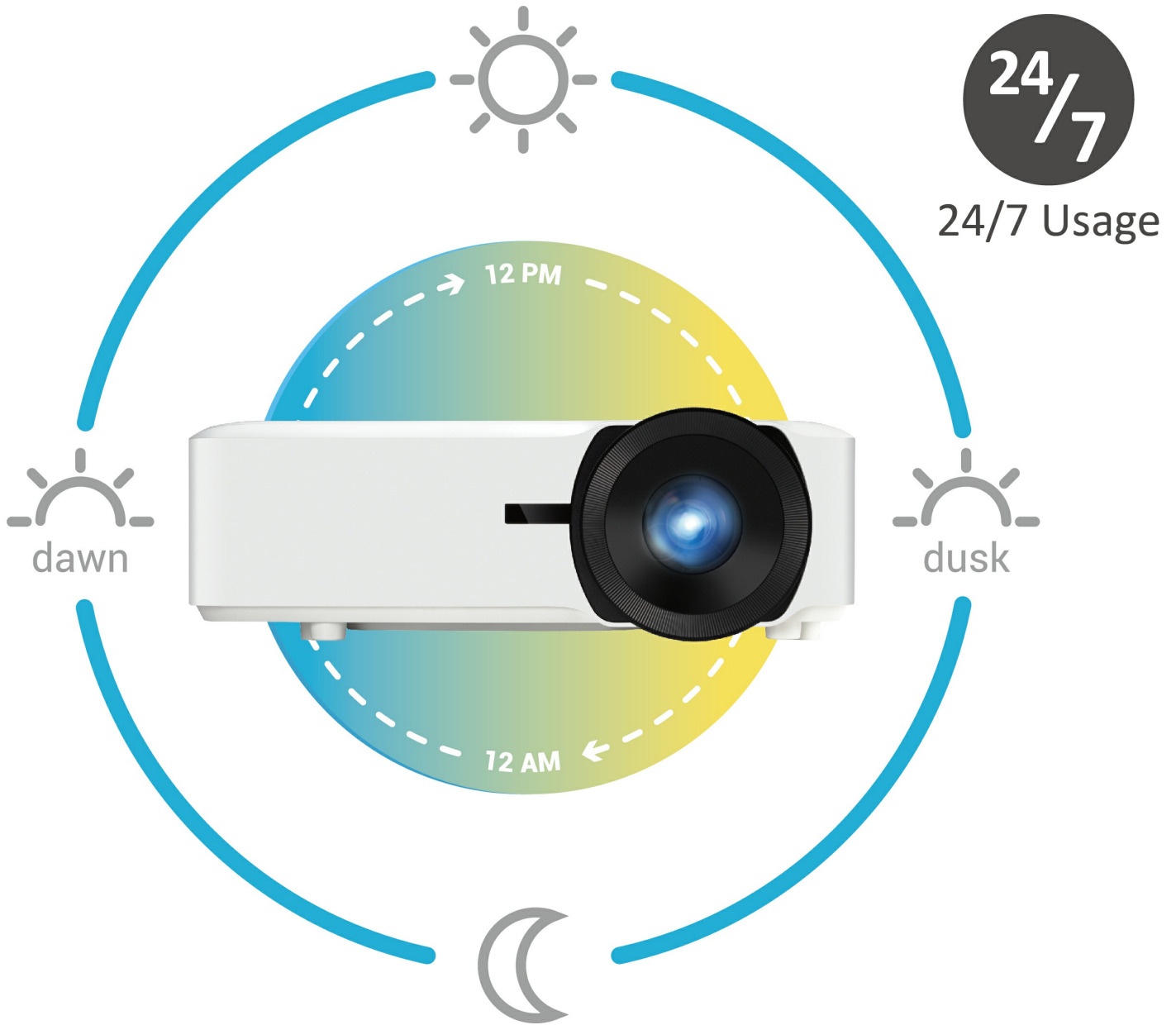
Its built-in HDBaseT receiver is a cost-effective solution to transmit uncompressed high resolution audio and video at a lengthy distance (100 meters for 1080p) when combined with a Cat.5e/6 cable and is compatible with any certified HDBaseT transmitter.

HDBaseTReceiver



Non-stop 24/7 Operation

With an advanced cooling design, it enables 24/7 operation without degradation of quality or performance, making the projector ideal for applications that require continuous projection.
24/7 Operation



Network Management

This projector comes equipped with Control 4, Crestron, AMX, Extron and ViewSonic vController, an easy-to-use network management tool.

* The Control 4 driver will be built into the device in advance and get certification once it has finished the verification process.

LAN Control



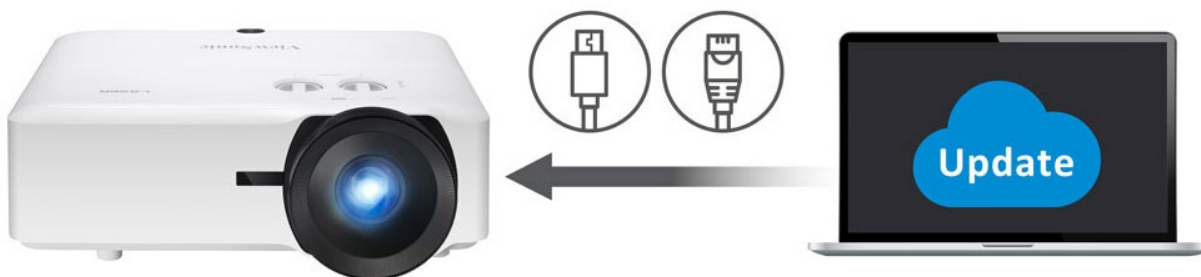
256
Projectors



A Simpler Way to Update Projector Software

ViewSonic Projector Software Update is available online and gives you the ability to keep your projector firmware up to date easily and conveniently; no need to take your projector in to a service center for software updates.

Projector Software Update & LAN Update



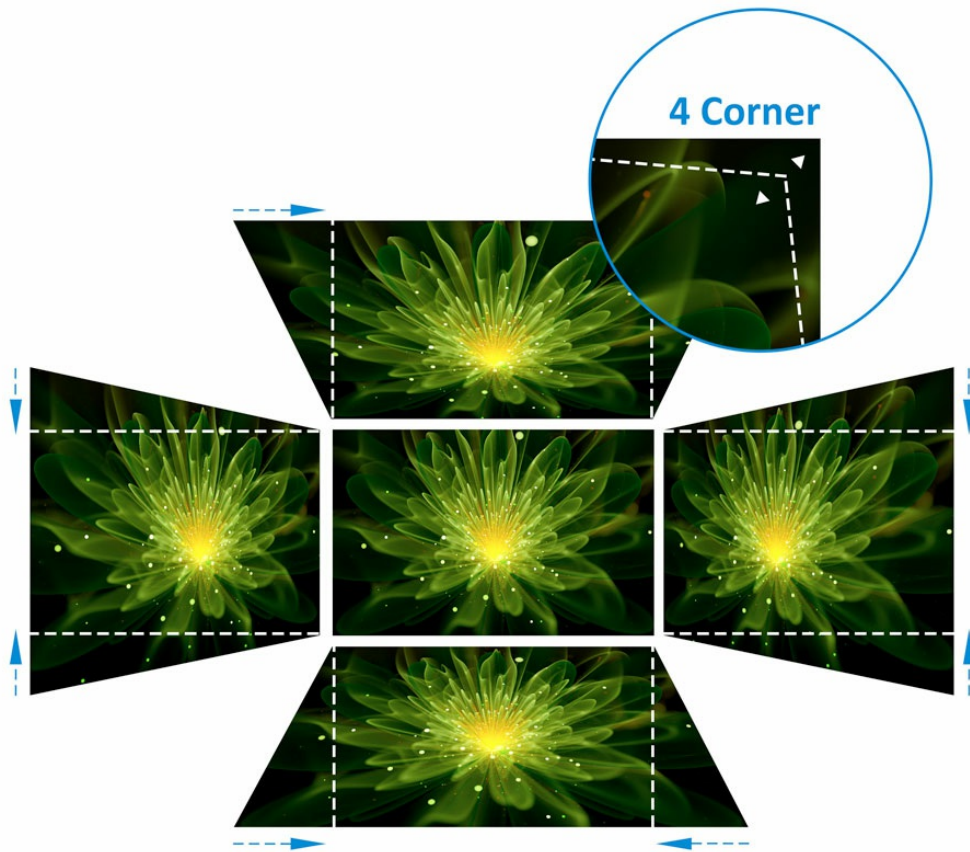
Easy Image Adjustment

Horizontal and Vertical Keystone correction along with 4 corner adjustment features eliminate

crooked or distorted images for a perfectly proportioned picture every time.

H/V Keystone

4 Corner Adjustment



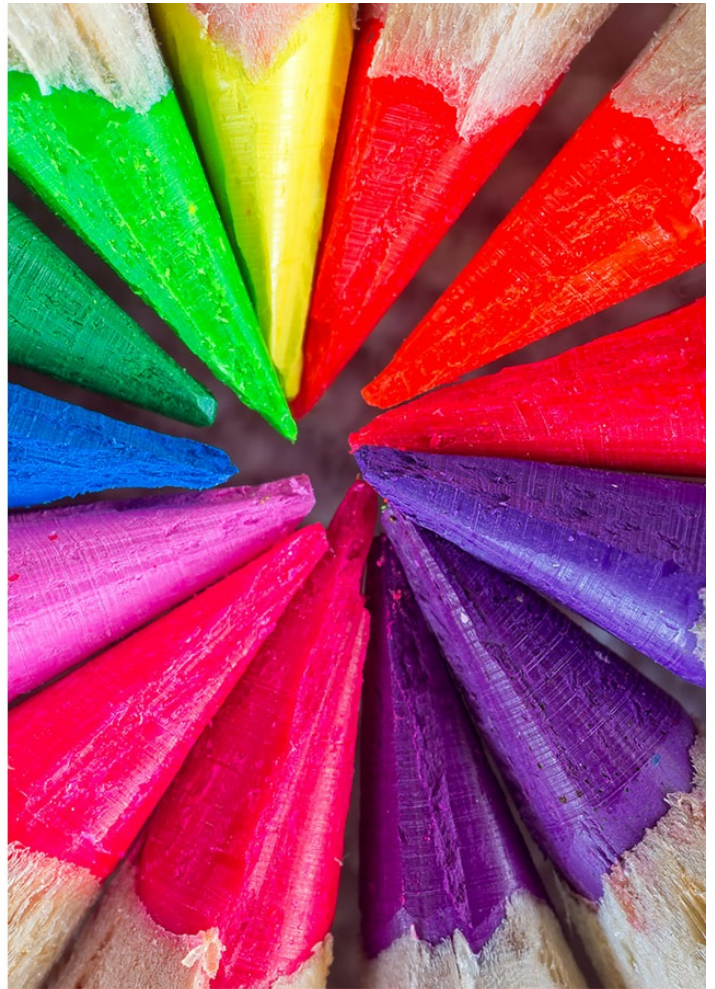
Amazing Color Accuracy

ViewSonic's proprietary SuperColor™ Technology displays a wide color range, ensuring that users enjoy a true-to-life color performance in both bright and dark environments without sacrificing image quality.

SuperColor™ Technology



Normal



SuperColor™ Technology

Sealed Optical Engine with IP5X

The advanced sealed optical engine prevents dust and moisture from entering the projector and affecting the thermal system to ensure that the image quality and long lifespan are maintained.

IP5X



Reduced Energy Consumption

When no signal has been detected, the projector will automatically power off to conserve energy and therefore prolong its lifespan.

Auto Power Off



Energy Efficiency

Power Saving Mode allows users to extend the projector's lifespan and minimize energy consumption. When in Power Saving Mode, the projector will automatically switch into Eco Mode and SuperEco Mode whenever there is no signal input detected.

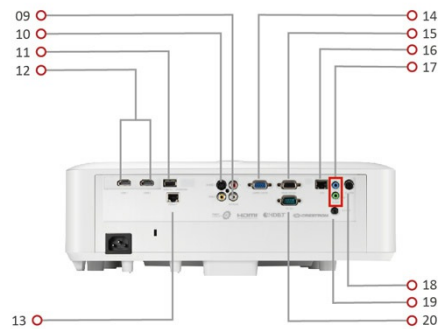
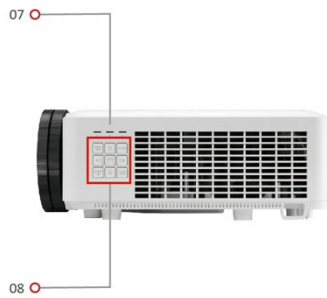
Power Saving



Eco Friendly



Exterior & Rear I/O Connectors



1. Power Key & IR
2. Front IR
3. Lens
4. Lens Shift Control Knob
5. Zoom/Focus Ring
6. Adjustment Foot
7. LED Indicator
8. Keypad
9. Composite

- 10. S-Video
- 11. USB Type A (5V/1.5A)
- 12. HDMI x 2
- 13. HDBaseT
- 14. Computer In
- 15. Monitor Out
- 16. LAN
- 17. Audio in & Out
- 18. 3D VESA
- 19. 12V Out
- 20. RS-232



Technical Specifications

Specification	Projection System	0.48" WUXGA
	Native Resolution	1920x1200

	DMD Type	DC3
	Brightness	5000 ANSI Lumens
	Contrast Ratio	3000000:1
	Display Colour	1.07 Billion Colours
	Light Source Type	Laser Phosphor system
	Light Source Life (Normal)	up to 20000
	Lamp Watt	Nichia 67W x2
	Lens	F=1.83-1.86, f=9.6-9.4mm
	Projection Offset	0%
	Throw Ratio	0.81-0.89
	Optical Zoom	1.1X
	Digital Zoom	0.8x-2.0x
	Image Size	60"-200"
	Throw Distance	1.04-3.83m (100"@1.74m)
	Keystone	H: +/-40° , V: +/-40°
	Lens Shift V. Range	Yes (+50%, -50%)
	Lens Shift H. Range	Yes (+23%, -23%)
	Audible Noise (Normal)	35dB
	Audible Noise (Eco)	28dB
	Input Lag	16ms
	Resolution Support	VGA(640 x 480) to WUXGA(1920 x 1200)
	HDTV Compatibility	480i, 480p, 576i, 576p, 720p, 1080i, 1080p
	Video Compatibility	NTSC, PAL, SECAM
	Horizontal Frequency	15K-102KHz
	Vertical Scan Rate	23-120Hz
Input	Computer in (share with component)	1
	Composite	1
	S-Video	1
	HDMI	2 (HDMI 1.4a/HDCP1.4 x2)
	Audio-in (3.5mm)	1
	Audio-in (RCA R/L)	1
	3D VESA (Sync)	1
	HDBaseT	1
	RJ45 Input	1 (LAN control)
	Output	Monitor out
Audio out (3.5mm)		1
Speaker		10W x2
USB Type A (Power)		1 (5V/ 1.5A) (share with service)
12V Trigger (3.5mm)		1 (3.5mm)
Control	RS232 (DB 9-pin male)	1
	RJ45	1
	USB Type A (Services)	1 (share with USB A Output)
Others	Power Supply Voltage	100-240V +/- 10%, 50/60Hz (AC in)
	Power Consumption	Normal: 280W

Standby: <0.5W

Operating Temperature	0~40°C
Net Weight	6.6kg
Dimensions (WxDxH) with Adjustment Foot	405x305x145mm
OSD Language	English, French, Spanish, Thai, Korean, German, Italian, Russian, Swedish, Dutch, Polish, Czech, T-Chinese, S-Chinese, Japanese, Turkish, Portuguese, Finnish, Indonesian, India, Arabic, Vietnamese, Greek, total 23 languages

Standard Accessory

Power Cord	1
VGA Cable	1
Remote Control	1 (w/ laser pointer)
QSG	1
